



## Shock Wave Therapy Device

OCE-ESWT series ●

## Ultrasound Physiotherapy Equipment

OCE-ETUS series ●

## Deep Muscle Stimulator

OCE-DMST series ●

## Tecar Therapy

OCE-REFS series ●

## Laser Therapy

OCE-WLTS series ●

## Plasma Lift MEDICAL

OCE-PLTS series ●

## Cranial electrotherapy stimulation

OCE-MSLS series ●

## Shenzhen Oceanus Medical Device Co.,Ltd

☎ +86 13824204367 ( WhatsApp )

✉ James@oceanuswave.com

✉ Info@oceanuswave.com

📍 Yinjin Building, Liuxian Road 3, Baoan District, Shenzhen, China

## Technical principle

The hand piece contains a projectile that is accelerated through the electromagnetic transfer of kinetic energy. This kinetic energy is then transformed into impact energy in the applicator head. The impact energy delivered from the applicator head results in radial pulses in the target tissue.



OCE-ESWT-001



OCE-ESWT-002



OCE-ESWT-003

## Oceanus Highlights

- Compact and mobile
- Extremely low maintenance costs
- No anesthesia required
- Comfortable treatment
- Short treatment time
- Simple installation & easy maintenance
- High localization precision with no imaging required

## Applications

### Heel Spur



Metatarsalgia



Shoulder Calcification



### Achilles Tendonitis



Epicondylitis



Acromion Pain



## Aesthetics for cellulite



- ▶ Body shaping
- ▶ Anti-cellulite treatment
- ▶ Scar and wrinkle smoothing
- ▶ Skin elasticity improvement
- ▶ Connective tissue tightening
- ▶ Treatment of pregnancy stretch marks
- ▶ Treatment of post-liposuction irregularities

## Urological pain therapy



### ED

- Significant improvement of
- ▶ Sexual function

## Penile revascularization therapy



### IPP

- Significant improvement of
- ▶ Pain
  - Stabilisation in advancement of
  - ▶ Penis curvature
  - ▶ Plaque formation



### CPPS

- Significant improvement of
- ▶ Pain
  - ▶ Urination conditions
  - ▶ Erectile function

## Portable Shockwave Therapy Device



OCE-ESWT-001



OCE-ESWT-002



Head



Handle



Foot Switch



Silicone Cap



Box

## Handpiece

Minimum 4 millions shocks



## Features

- 7.0" color touch screen
- Plug & Play system
- Multi-preset treatment protocols
- User friendly and reliable
- No air compressor, low maintenance cost

## Indications

- Physiotherapy
- Rehabilitation
- Orthopedics
- Sports medicine
- Aesthetic medicine
- Treatment for urological pain therapy and erectile dysfunction



## Footswitch

Use it to trigger the handpiece to work



## Technical Specifications

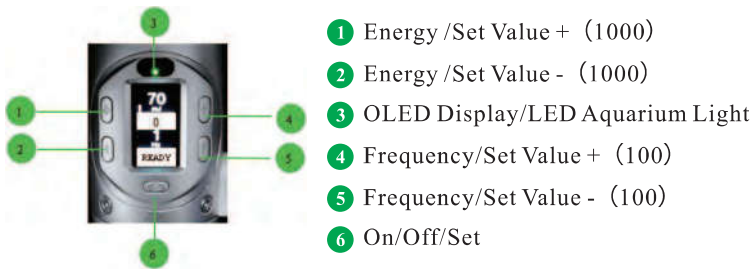
Power Levels/Energy	10 to 185 mJ (equivalent to 0.1-5 bar)
Frequency	1-22 Hz
Modes	4 Burst modes (continuous/4/8/12 shocks)
Programmes	7 preset programmes, adjustable
Protocols	More than 25 illustrated preset treatment recommendations
Controls	Colour touch-screen for all software operations
Applicators	6/15/25mm(35mm as option)
Life Time	Minimum 4,000,000 shocks per handpiece, 300,000 shocks per head
Dimensions	290x240x130mm(L/W/H)
Weight	2.07kg(controller unit only)
Warranty	3 years for controller unit, 1 year for accessories

## Mobile Shockwave Therapy Device



## OCE-ESWT-003

### Operate on handle directly



### App on Smartphone



### Technical Specifications

Power Levels / Energy	10-185 mJ(equivalent to 0.1-5 bar)
Frequency	1-22 Hz
Display Mode	OLED display
Controls	Trigger to treat on handle directly without foot pedal View all setup and therapy program information on phone via bluetooth
Size Of Therapeutic Head	6/15/25mm(35mm as option)
Life Time	Minimum 4,000,000 shocks per handpiece, 300,000 shocks per head
Dimensions	300x240x180mm(main unit)
Gross Weight	6Kg

### Features

- Small volume -- 1/3 of Portable type
- Complete functions -- Almost the same with Portable type
- Easy to control -- Operate on handle directly
- Modern look -- The smallest one
- Bluetooth 4.0 communication function -- connect with smart devices
- App on Android and IOS
- Build-in user platform

### Indications

- Physiotherapy
- Rehabilitation
- Orthopedics
- Sports medicine
- Aesthetic medicine
- Treatment for urological pain therapy and erectile dysfunction

### Potential users

- Home care
- Sport team
- Community hospital
- Clinic (out-door visit)

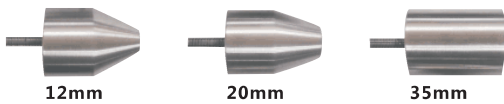
## Deep Muscle Stimulator



## How it works?

The Deep Muscle Stimulator provides deep muscle tissue with kinetic forms of percussion and mechanical vibrations, to stimulate proprioceptive functions, relieve muscle pain caused by various conditions like strain, lactic acid build up and scar tissue etc. This, in turn, increases recovery of patient or athlete, allowing you to maintain your active lifestyle.

## Therapeutic head



## Benefits

- Increase the rate of blood flow
- Increase lymph flow
- Reduce post-surgical swelling and pain
- Get relief from frozen shoulder

Transmit Mechanical Force

Biological Effect

Release Adhesions

Break Down Calcification

Dilate Blood Vessels

Promote Metabolism

Complete Pain Relief, Quick Repair The Injured Tissue

- Reduces muscle spasms
- Reduces pain in overuse injuries of the knee
- Reduces muscle soreness
- Improves relaxation



## Indications

- Effective management of acute, chronic pain
- General or localized muscle spasms
- Migraine, sciatica, TMJ, Carpal Tunnel Syndrome
- Tendonitis, bursitis, edema, frozen joints
- Soft tissue injuries, including sprains, strains
- Musculoskeletal Dysfunction
- Integrated Manual Therapy

## Specifications

- RPM: 1200-3600 rpm and adjustable
- Frequency: 20-60Hz
- Size: 24×5×13.6cm (L/W/H)
- Therapeutic head: 12mm/20mm/35mm
- Telescopic distance: 6mm
- Diameter of handle: 4.2cm
- Treatment depth: 20-40mm
- Weight: 2.5kg
- Material: Stainless Steel

## Ultrasonic Physiotherapy Equipment



**OCE-ETUS-001**

## Indications

- Treatment Of Pain
- Muscle Spasm
- Joint Contracture Relief
- Limb Dyskinesia
- Soft Tissue Contusion

## Operation Menu



## Features

- Varied therapy programs
- All treatment modes are settable
- 7.0" touch screen
- 2 control knob with light indicator
- 1 & 3 MHz ultrasound frequency
- Pulsed & continuous modes
- Waterproof factor of ultrasound head

## Technical Specifications

Frequency	1MHz / 3MHz	RBN	< 8.0
Max Intensity	3W/cm <sup>2</sup>	Ultrasound head	5cm <sup>2</sup> (1cm <sup>2</sup> / 2cm <sup>2</sup> as option)
Work mode	Continuous / Pulsed	Dimension	290×240×130mm (device)
Frequency	16Hz/48Hz/100Hz	Gross weight	4Kg
Pulse duty factor	10-90%, stepping 10%		

**Handheld Ultrasonic Physiotherapy Equipment**



**OCE-ETUS-002**

**Indications**

- Treatment of pain
- Muscle spasm
- Joint contracture relief
- Limb dyskinesia
- Soft tissue contusion

**Features**

- OLED display design, intuitive and clear
- Five-way key setting, easy to operate
- Small, ergonomic design that is easy to hold and portable
- Freely adjustable treatment times, 1-30 minutes
- Continuous / Pulsed modes
- Head warming feature pre-heats up to 95°F the sound head applicator for increased patient comfort



**Technical specifications**

Acoustic Frequency	1.0MHz±10%	Duty cycle	100%, 90%, 80%, 70%, 60%, 50%, 40%, 30%, 20%, 10%
Pulse frequency rate	100Hz±10%	Treatment Time	Freely adjustable, 30 minutes
Waveform	Continuous / Pulsed	Max. Effective intensity	Max 1.6 W/cm <sup>2</sup>
Effective radiation area	5cm <sup>2</sup> ±10%	Preheat time	Max 2 minutes

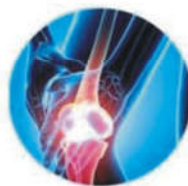
## Handheld Laser Therapy

### Indications

- Pain Relief
- Relieves Muscle Spasms
- Soft Tissue Injuries
- Sports Injuries & Sprain
- Athletics System Injuries
- Rheumatoid Arthritis



Shoulder of periarthrosis



Arthritis



OCE-WLTS-001



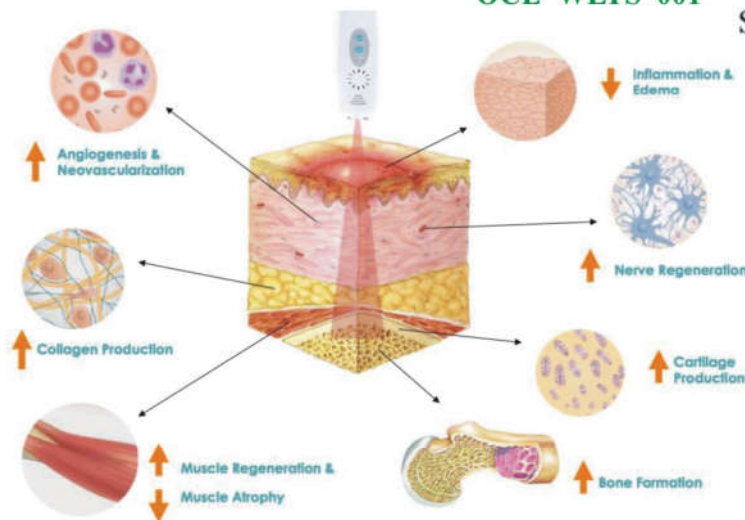
Cervical spondylosis



Slipped disc



Sports injuries



### Features

- Natural healing, non-invasive treatment, no side effect, no cross infection
- Rechargeable for continuous operation of 4 hours.
- Small, ergonomic design that is easy to hold and portable.
- Suitable for both professional and personal use
- Easy to operate and user friendly
- Perfect combination of 810nm & 650nm

### Technical Specifications

- Laser wavelength: 810nm and 650nm
- Terminal laser output: 12 laser beams with 650nm; 1 laser beams with 810nm
- Max power: 5m W±20% 150m W±20%
- Using time: 4 -5 hours
- Lens Material: tempered glass
- Working mode: continuous mode
- Battery capacity: built-in lithium battery 1500mAh



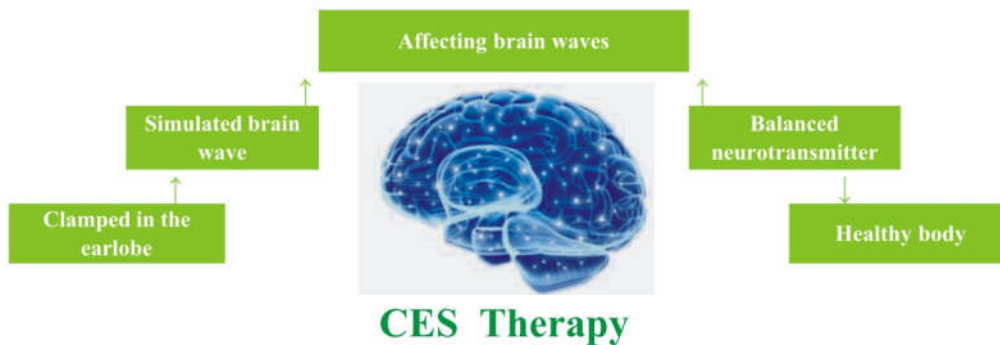
## Cranial Electrotherapy Stimulation



**OCE-MSLS-001**

## How it works?

Your brain naturally has electrical currents. The cranial electrotherapy stimulation (CES) device delivers a natural level of microcurrent, via small clips worn on your earlobes, through the brain to stimulate and modulate specific groups of nerve cells. CES is the process of using an electrical current of less than one-half milliamper, delivered directly into the brain via earclip electrodes for 20 to 60 minute sessions in order to treat anxiety, insomnia and depression.



## Features

- **Portable**
- **Non-Invasive, Drug Free**
- **No Side Effects**

## Indications

- Decreased energy and fatigue
- Oversleeping or insomnia
- Persistent sadness
- Feelings of hopelessness
- Chronic and unsubstantiated worry
- Repeated, random panic attacks

## Operation Menu



## Specifications

- Frequency: 0.5HZ/1.5HZ/100HZ
- Current: 1-12 gears, current range is 50uA--600uA, per gear add 50uA
- Treatment Time: 0-30min
- Battery capacity: built-in lithium battery
- Time setting: 6 Hours
- Li-battery Voltage: AC100V~240V

## Plasma Lift MEDICAL



OCE-PLTS-001

### Technical Principle

Plasma Lift MEDICAL uses new technology of treatment, based on electrical discharge – plasma (beam of electrons and ions). Plasma discharge is generated by safe high voltage between the tip of the device and grounded skin of patient. Due to its very thin discharge <0.1 mm it is possible to treat area around eye – Blephero-plasty.

### Indications

- Aesthetic medicine
- Shallow and deep wrinkles
- Ophthalmology
- Pigmented and age spots
- Dermatology
- Fibroma molle



### Features

- Safe, effective, fast, easy to operate
- 7.0" Color Touch Screen
- Technology of direct current
- Plasma discharge treatment
- Small, light, portable
- Handle-ergonomic design that is easy to hold



Revolutionary medical device for use in dermatology, aesthetics, non-ablative surgery, ophthalmology and many other medical disciplines.

### Technical Specifications

Input of power supply	AC 100 to 240 V / 50/60 Hz
Output of power supply	5VDC, max. 2.0 A
Intensity of plasma discharge	0.3 – 1.8 W
Voltage of plasma discharge generator	0.8 – 7 kV
Weight	2 kg (controller unit only)
Dimensions	290x240x130(L/W/H)

AC 100 to 240 V / 50/60 Hz
5VDC, max. 2.0 A
0.3 – 1.8 W
0.8 – 7 kV
2 kg (controller unit only)
290x240x130(L/W/H)

## Tecar Therapy



**OCE-REFS-001**



**Resistive handle**



**Capacitive handle**

RET CET RF combined Return Plate to be Circuit loop, electric circulation through the resistive medium formed by the live tissues increases its temperature

## Indications

- Traumatic injuries
- Sports physiotherapy
- Tendinopathy (Achilles, shoulder)
- Osteoarthritis
- Promoting fracture healing
- Joint injuries

## Features

- 7.0" Color Touch Screen
- Monopolar radio frequency CAP/RES
- Frequency 448 kHz
- Output power in RES mode 100 W
- Output power in CAP mode 350 VA
- CAP/RES electrodes



**Return Plate**

## Technical Specifications

Frequency RES	448 kHz	Frequency CAP	390 kHz -449 kHz
Output power in RES mode	100V, 100W	Output power in CAP mode	630V , 350VA
Capacitive electrode	30/40/50/70mm	Resistive electrode	30/40/50/70mm
Input power	AC 100-240v; 50Hz/60Hz	Warranty	2 years
Dimensions	420× 320x130mm(L/W/H)	Weight	6kg